

The Future

Our partners hope that residents will now build on these environmental improvements and come together to help maintain the area, creating local guardians and building on the community spirit shown throughout the project.

Our police colleagues and other partners have committed to providing regular community engagement events at the location, delivering key messages around home security and personal safety as a legacy of the improvement works in this area.

Get in Touch

If you would like to get in touch about setting up a residents' group or to provide feedback on the project, please contact us using the details below.



North Worcestershire
Community Safety Partnership



Bromsgrove
District Council
www.bromsgrove.gov.uk

communitysafety@bromsgroveandredditch.gov.uk



contactus@bdht.co.uk



bsr.snt@westmercia.pnn.police.uk



North Worcestershire
Community Safety Partnership



West Mercia
POLICE

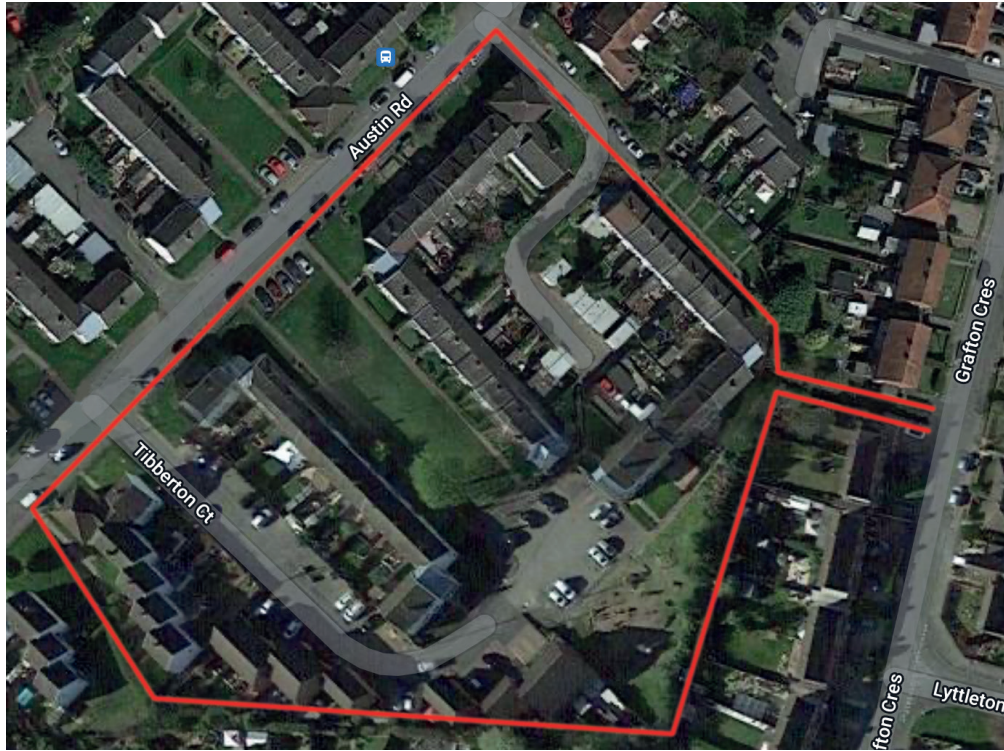


bdht



Bromsgrove
District Council
www.bromsgrove.gov.uk

Introduction



Map data ©2022 Imagery ©2022, CNES / Airbus Getmapping plc, Infoterra Ltd @ Bluesky, Maxar Technologies.

In August 2020 Project Officers from the Council's Community Safety Team visited Tibberton Court in response to concerns raised by residents, through their Ward Member Councillor Michael Thompson.

The visit included discussions with local residents and identified a number of environmental issues that were enabling anti-social behaviour and crime. It was clear that there was an opportunity for multi-agency partnership working to put in place some long-term improvements to the area.

Garage Removal



The garages were demolished and open spaces for vehicles were created. The area now appears cared for and more people are using the parking facilities, increasing natural surveillance and deterring nuisance behaviour and fly-tipping.

After



Garage Removal



Before

Unused garages had been boarded up creating an unsightly appearance of a derelict and uncared for location. Fly-tipping was a regular problem at the site and the area was rarely used for its intended purpose as a car park.

Organisations came together at the regular Safer Bromsgrove meeting and agreed their support for a Capital Project to carry out these improvements. The aim was to reduce opportunities for anti-social behaviour and crime and partners also wanted to collaborate with residents to create an area that felt safe and looked after, building on the community spirit already in the neighbourhood.

Local residents were fully involved in the planning and design of the improvements, with Officers calling on householders to discuss the proposals. A drop-in event was held using the Mobile Police Vehicle and surveys were conducted with residents to ensure that the correct works were identified to solve the problems that people were most concerned about. The main landowner and housing provider, Bromsgrove District Housing Trust (BDHT) carried out most of the works and the Safer Neighbourhood team for Charford secured a small West Mercia Police grant to support the project.

Unfortunately Covid restrictions extended the original plan from 12 months plan to two years but finally all of the works are complete. It is now time to highlight the improvements, review the impact of the changes in the community and continue discussions with residents to see what else can be taken forward in the future to keep the area safe and secure.



Removal of Seating Area



The gap between the fencing and the slabs created an 'unofficial' seating area that encouraged loitering and nuisance. 'Den' areas had also been made in the hedgerow.

Before



Alleyway Improvements

Agencies worked closely with the homeowner to carry out clearance work and install new fencing to protect the hedge boundary. This removed opportunities for nuisance, loitering and littering and would allow for better maintenance going forward. The tree growth was cut back to improve the lighting along the footpath and a temporary CCTV camera was installed for a 12-week period to monitor the area.



After



After



Alleyway Improvements



The alleyway from Grafton Crescent was a well-used route for residents, however vandalised and inadequate hedging had created areas for loitering and litter traps. The single street lamp was partially obstructed by tree growth, reducing feelings of safety when using the footpath.

Before



Removal of Seating Area

New fencing was installed which removed the opportunity for loitering and secured the hedgerow.



After



Improved Perimeter Fencing

From Grafton Crescent into Tibberton Court there was an area of unsightly, damaged fencing. This gave access to the rear of properties in Grafton Crescent, resulting in fly-tipping into these gardens. Other boundaries had old Heras fencing in place that had vegetation growing through it.



Before



The Play Area



After



The play area was cleared of all equipment and enclosures, removing opportunities for nuisance and damage and resulting in an accessible space that is open for general use and play.

The Play Area



Before



The Play Area had been closed due to vandalism and safety concerns, however some young people still managed to gain entry causing nuisance, litter and further damage. The general impression was of an unsightly, dangerous and uncared for location.



Improved Perimeter Fencing



New fencing improved the overall appearance of the area, with regular litter picks and maintenance reducing littering and fly-tipping.



After



Removal of Litter and Fly-Tipping



Before

The area looked uncared for, which in turn led to routine fly-tipping and excessive litter in this area and generally across the Court.



Removal of Litter and Fly-Tipping

Bromsgrove District Council and BDHT have worked together to develop environmental patrol patterns, regularly monitoring the area for littering and fly tipping. Issues are now picked up and dealt with quickly, resulting in fewer incidents and providing an area that looks clean and looked after.



After



After